

VALUE 19" Shelf Rack, 1U, with 2 adjustable dividers

26.99.0341

Features:

- 19" DIN Rail Bracket
- Suitable for desktop patch panels and devices
- 2 adjustable shelves included

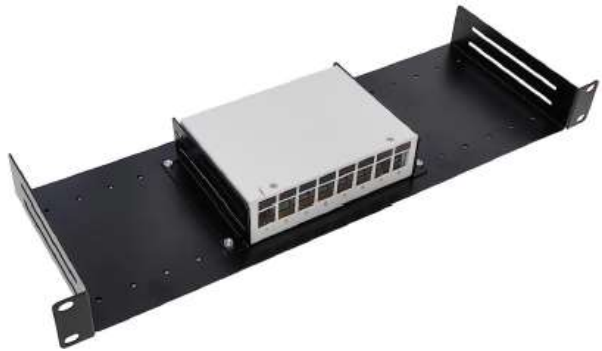
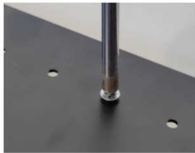
Installation:

Step 1

Find a suitable place for the patch panel/devices that you want to install in the rack.

Step 2

Insert the 4xscrews from the back of rack and tighten to them fix the adjustable shelves.



Step 3

Place an M6 plastic washer onto an M6 screw. Repeat this until you have prepared 4x M6 screws. Then tighten all the screws.

