

# BE THE ONE

MOBOTIX ONE – The NEXT Generation of IP Video Surveillance



- Camera-**integrated AI-based Activity Sensor**
- 4K images with **outstanding WDR and low-light performance**
- Large selection of optics with **fixed focal lengths and varifocal lenses**
- Simple installation with the **tried-and-tested VarioFlex bracket**
- **IP66, IK10, MTBF: 100,000 h**
- Exceptional **durability and ROI**
- **Made in Germany**



More information  
[www.mobotix.com](http://www.mobotix.com)

**MOBOTIX**  
Beyond Human Vision

# MOBOTIX ONE – Take a Closer Look:



## M1A-S with **fixed** lens

Image sensor (2 variants)

- 4K Day&Night
- 4K Night

Viewing angle (HxV), 6 fixed lens variants per image sensor

- Wide (f/1.8): 120°x60°; 95°x50°; 60°x33°
- Normal (f/1.8): 45°x25°
- Tele (f/1.8): 30°x17°; 15°x8.5°

Advantages of a fixed lens video system:

- No moving parts: Long-term maintenance-free and cost-effective operation
- Fixed monitoring area: No need to focus
- No (unintentional) adjustment of the focus: No loss of relevant information



## M1A-S with **motorized varifocal** lens

Image sensor

- 4K Day&Night

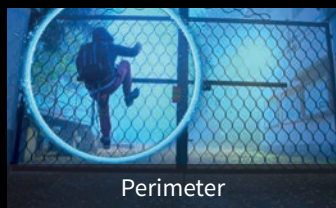
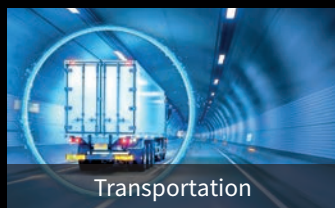
Viewing angle (HxV), 2 varifocal lens variants

- Wide (f/1.3): 112°-47.5° (H) x 58°-26.6° (V)
- Tele (f/1.7): 42°-15° (H) x 22.8°-8.4° (V)

Advantages of a varifocal lens video system:

- Quickly installed: Simple adjustment of the camera optics to the installation location
- Changing camera positions: e.g. on construction sites, events, etc.
- Monitoring of large areas: Focusing on details during live surveillance

## AI-based Perimeter Protection at the highest technical Level

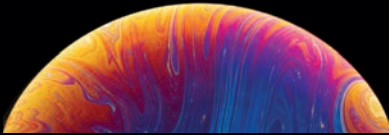


More information  
[www.mobotix.com](http://www.mobotix.com)

## Unparalleled DESIGN

German-built, durable and maintenance-free, the MOBOTIX ONE is designed to withstand ambient temperatures of -40 to 65°C (IP66, IK10).

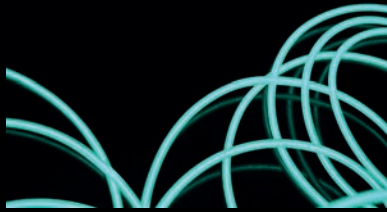
It offers a large selection of optics (fixed focal lengths and varifocal lenses) and is easy to install (proven VarioFlex bracket and concealed cable routing as with M26/M16). Using real distributed architecture, The MOBOTIX ONE showcases the highest level of data and cyber security (MOBOTIX Cactus Concept).



## Unparalleled PERFORMANCE

The MOBOTIX ONE is at the cutting edge of IP video software. It offers 30 fps at 4K resolution, HD audio (an integrated speaker and microphone) and two integrated adaptive IR LED lights offer illumination for up to 30 m.

It has Integrated AI-based analytics and recording and uses a high-performance transmission of encrypted event metadata instead of image data.



## Unparalleled IMAGE QUALITY

MOBOTIX ONE delivers a 4K UHD image sensor giving you crisp and clear image quality 24/7, even in very low light.

Intelligent continuous recording allows for an event based change to maximum resolution and frame rate and up to 15 seconds pre-alarm recording. With a WDR of up to 120 dB, it recognises a dynamic range comparable to that of the human eye.



## Unparalleled CONNECTIVITY

The ultimate in compatibility, The MOBOTIX ONE offers comprehensive codec support (H.264, H.265, MxPEG+ and MJPEG), 3rd Party and IoT Device Integration (via ONVIF Profile G/S/T, MQTT and MODBUS/TCP) and is fully integrated to work with MOBOTIX HUB, MOBOTIX CLOUD and MOBOTIX ManagementCenter.

Based on Deep Learning, the software interface is geared for future MOBOTIX Camera Apps.



## Unparalleled ACTIVITY SENSOR

The new MOBOTIX ActivitySensor with AI-based object detection (movement and direction of people and vehicles) offers a professional HiRes video security solution for perimeter and property protection with extremely reliable intrusion detection.

There are no more limitations as with traditional image analysis tools (video motion based).



## Unparalleled ROI

With a 5 Year Warranty and a MTBF of >10 Years, the ROI on the MOBOTIX ONE makes it an easy choice. The camera works without any server and network connection (only power supply needed), the OnBoard Analytics with ActivitySensor and the MOBOTIX ManagementCentre are free and the Internal DVR (up to 1TB) does not require additional recording software or NVR. High-end audio with bidirectional and lip-synchronized are already integrated and an industry standard microSD 64GB is already included. If that's not enough you will always be up to date with free life-long Software & Feature Updates.





# Everything that matters. As Standard.



Easy mounting with VarioFlex wall bracket

Robust housing PBT-30GF

Ambient light sensor

Premium fixed lens or varifocal variants

2x adaptive IR LEDs

Microphone

Status LED RGB

Loudspeaker



MOBOTIX ONE Vario

MOBOTIX ONE Fix

## MOBOTIX ONE Vario and MOBOTIX ONE Fix – Technical Details

MOBOTIX ONE single IP camera with premium varifocal/fixed lens and IR cut filter for day and night use • Max. Image size: 4K UHD (3840 x 2160 pixels), 16:9 • ONVIF-compliant (profile G, S, T) MOBOTIX ONE system platform with H.264, H.265, MxPEG+ and M-JPEG • WDR: up to 120dB, IR LEDs (up to 30m) • HD audio with integrated microphone and speaker • Temperature sensor, MxActivitySensor, Vibration sensor, Ambient light sensor • Function extensions (via optional MOBOTIX modules): 1x USB-C compatible with P7 interface boxes • Operating conditions: IP66/IK10, -40 to 65 °C • Internal DVR: 64 GB microSD (for MxPEG+ recordings) • Max. Power consumption: 12.95 W, power supply via network cable, PoE Class 3 (IEEE 802.3af) or 12/24VDC external power supply • Connections: 1x RJ45 socket for weatherproof network connection via MOBOTIX patch cable (Ethernet 1000BaseT), I/O (1x input, 2x outputs), 1x Audio Out, 1x 12/24VDC input, 1x USB-C - Software interface for MOBOTIX Camera Apps (based on Deep Learning) • Housing: PBT-30GF - Color: white • Warranty: 5 years (optionally extendable up to 8 years).

All available MOBOTIX ONE model and lens variants can be found at: [https://www.mobotix.com/en/mobotix\\_one](https://www.mobotix.com/en/mobotix_one)

MOBOTIX AG • Kaiserstrasse • 67722 Langmeil • Germany  
+49 (0) 6302 9816-103 • sales@mobotix.com • www.mobotix.com

MOBOTIX is a registered trademark of MOBOTIX AG in the European Union, the USA, and other countries. This may only be transferred to trade or commercial partners. Subject to change. MOBOTIX does not assume any liability for technical errors, printing errors or omissions. All rights reserved. © MOBOTIX AG 2024 (EN\_06/24)

**MOBOTIX**  
BeyondHumanVision