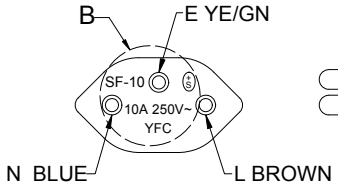
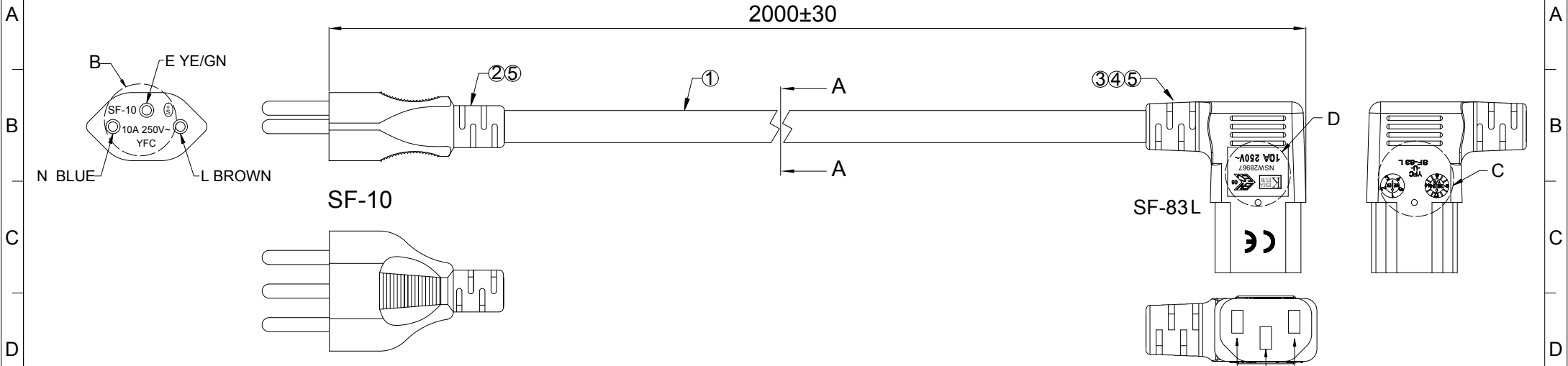


MOLDING:
SF-10
SF-83L

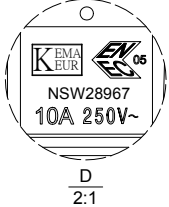
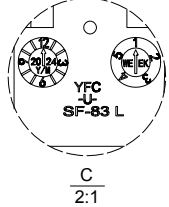
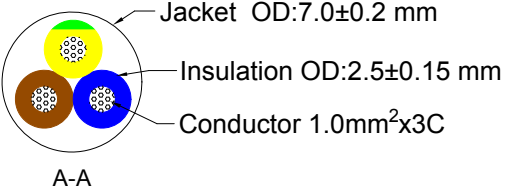
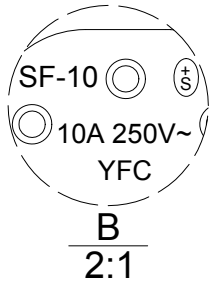
DATE	REV.	REVISION	DRAFTING	CHECKED
2024.10.08	A/0	Initial	LQF	



SF-10

SF-83L

CABLE MARKING (NO.931):
KEMA-KEUR H05VV-F 3x1.0mm² 300/500V ORDINARY DUTY NSW28976 YFC-BonEagle



Polarity and Conduction and Puncture Test	
Dielectric Voltage Withstand Test : 2000V / 1 Sec	
Electrical Performance (20°C)	
Item	Parameter
Conductor Resistance	≤ 26Ω/1000m
Voltage Rating	AC 300/500V

Customer Item NO.	Pantone Cable Color	YFC Cable Color	Pantone Molding Color	YFC Molding Color	Length (mm)
19.08.1319	/	BK012	/	BK012	2000±30

PINOUT			
SF-10		SF-83L	WIRE
E		E	YE/GN
L		L	BROWN
N		N	BLUE

SECOMP

No.	TITLE	DESCRIPTION	Q'TY
⑤	Molding	Molding 40P PVC BK012	AR
④	Housing	SF-83 One piece of inner frame IEC C13 Three plug Black	1PC
③	Terminal	SF-83 IEC C13 Three plug Female Straight insert of Common terminal brassy yellow 1.0mm ²	3PCS
②	Terminal	SF-10 Three plug Male One piece of inner frame Black Terminal Nickel plated 1.0mm ²	1PC
①	Cable	H05VV-F 1.0mm ² x3C BK012 PVC 300/500V	1PC

Unless specified on the drawing, tolerances are per the follows:

X.	±0.20	X°	±3
.X	±0.10	.X°	±0.3
.XX	±0.05		

DRAW. NO	GFAC-S240256	TITLE	H05VV-F 1.0mm ² x3C SF-10 TO SF-83L BK CABLE ASS'Y		
CUSTOMER	矽肯	DRAW	LQF	DATE	2024.10.08
CUST' R P/N	--	CHECK		DATE	--
SCALE	1:1	UNIT	mm	SHEET	1 of 1

Cable Spec NO.	GFDY-C200014	Part Number	--	Note	<input checked="" type="checkbox"/> RoHS2.0 <input checked="" type="checkbox"/> Reach <input type="checkbox"/> GP <input type="checkbox"/> HF <input type="checkbox"/> Other
----------------	--------------	-------------	----	------	--