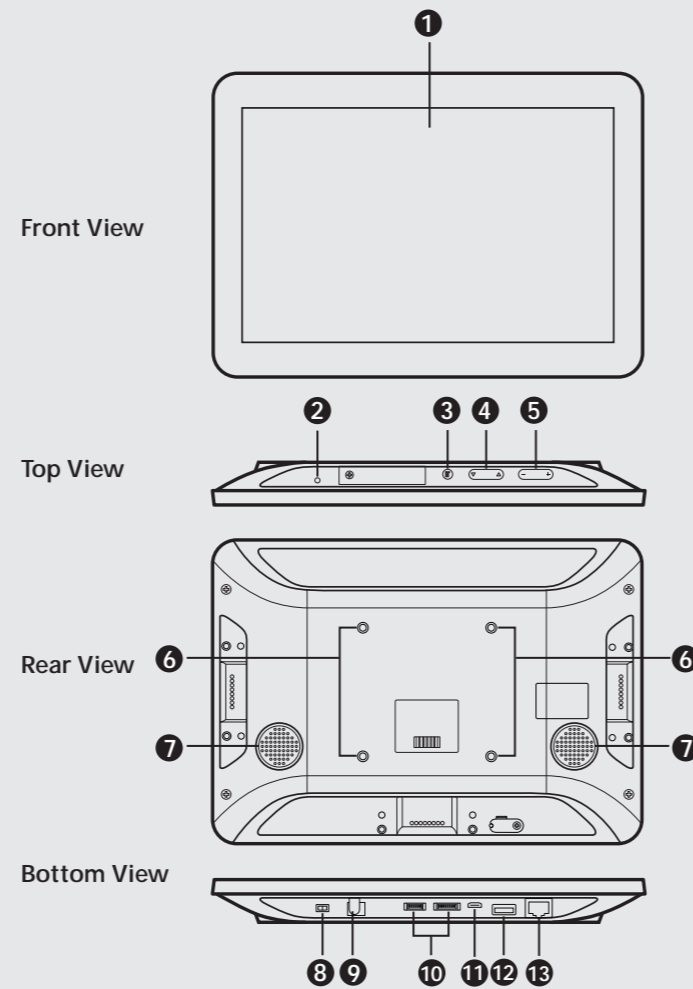
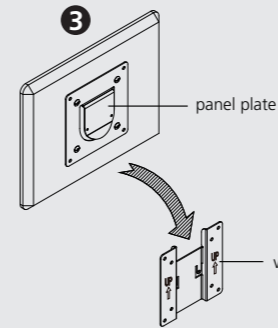
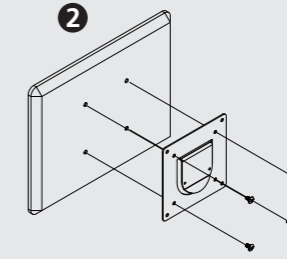
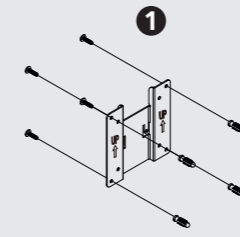


A Hardware Overview

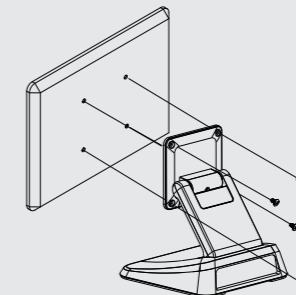


B Mounting the VK330

Wall Mount



Desk Mount



Note: Accessories for wall mount (VK302) and desk mount (VK304) installations are available for purchase. For more information, visit the VK330 product web page.

Package Contents

- 1 VK330 10.1" Touch Panel
- 1 90° RJ-45 cable adapter
- 1 user instructions

Support and Documentation Notice

All information, documentation, firmware, software utilities, and specifications contained in this package are subject to change without prior notification by the manufacturer.

To reduce the environmental impact of our products, ATEN documentation and software can be found online at <http://www.aten.com/download/>

Technical Support
www.aten.com/support

Scan for more information



A Hardware Overview

- 1 touch panel
- 2 status LED
- 3 function button
- 4 brightness +/-
- 5 volume +/-
- 6 screws holes for panel plate
- 7 speakers
- 8 power switch
- 9 power jack
- 10 for debugging purposes only
- 11 USB Micro-B port
- 12 USB Type-A port
- 13 LAN Port with PoE

B Mounting the VK330

The VK330 Touch Panel supports desk mount, wall mount, or any third-party mounting accessory that is VESA compliant (75 mm x 75 mm). For more information about the accessories, visit the product web page. To mount the VK330 to the wall using ATEN wall mount accessory, follow the steps below.

- 1 Secure the wall plate to the wall using the wall anchors and screws.
- 2 Secure the panel plate to the VK330 using the M4 screws.
- 3 Slide the panel plate to the wall plate.

C Installation

- 1 Using the 90° RJ-45 cable adapter provided and an Ethernet cable, connect the unit to a PoE switch / injector to provide power and access to the network.
- 2 Put the Power Switch to **ON**. The status LED lights green.

Software Configuration

Adding Viewers to the ATEN Control System App

1. After switching the power to **ON**, wait for the ATEN Control System welcome page to appear.
2. Tap **Start**. The Download Viewer page appears.
3. Search for controllers and add Viewers that you have created. For more information about the ATEN Control System app, refer to the *ATEN Control System User Manual*.

Configuring the Network Settings

To configure network settings:

1. Press the **Function** button.
2. Tap **Network & Internet > Ethernet > Ethernet IP Mode** to configure the network settings.

Operation

- To return to the settings page, press the **Function** button once.
- To return to the ATEN Control System app from the settings page, tap **Return to ATEN Control System App**.