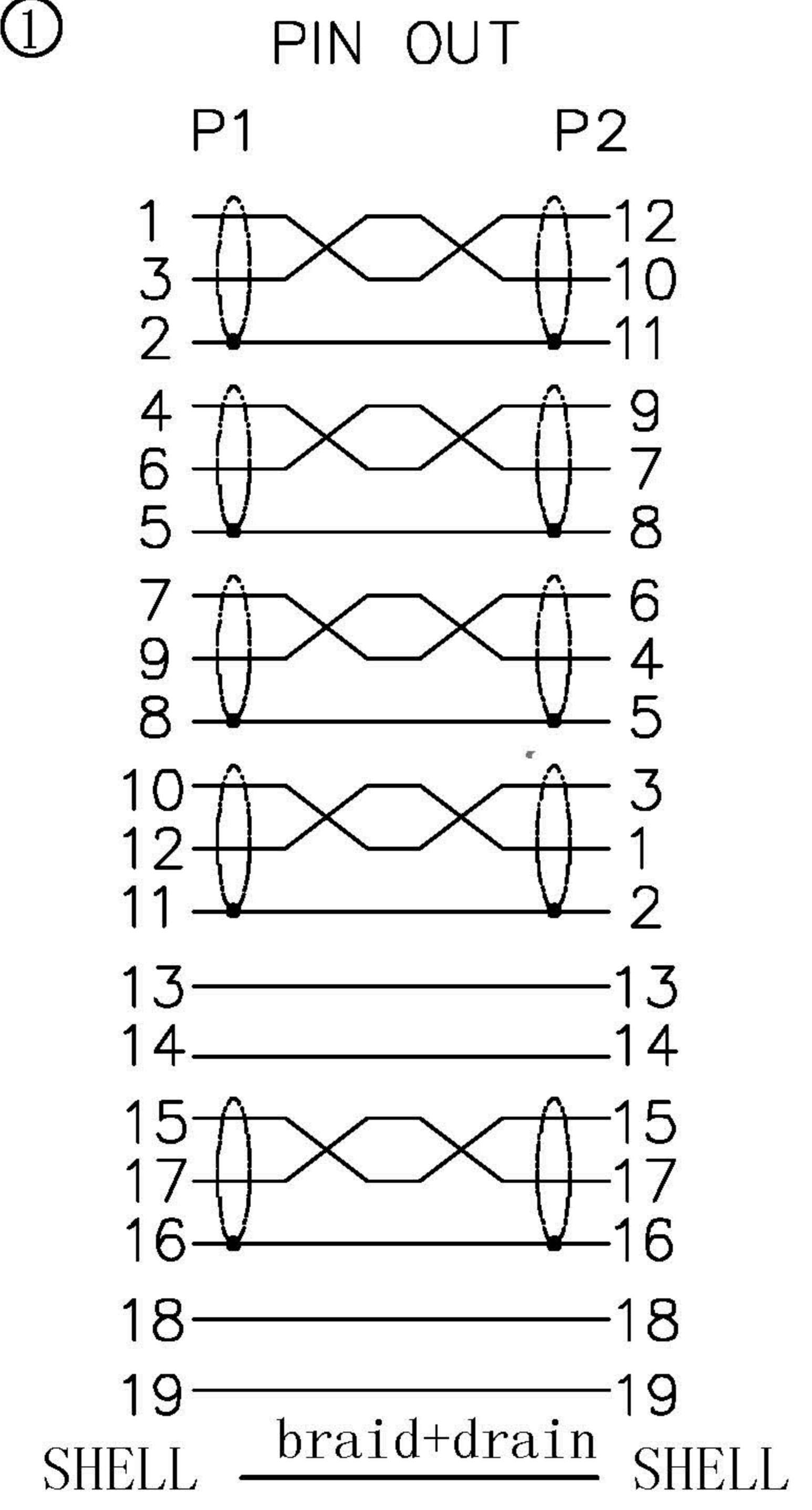
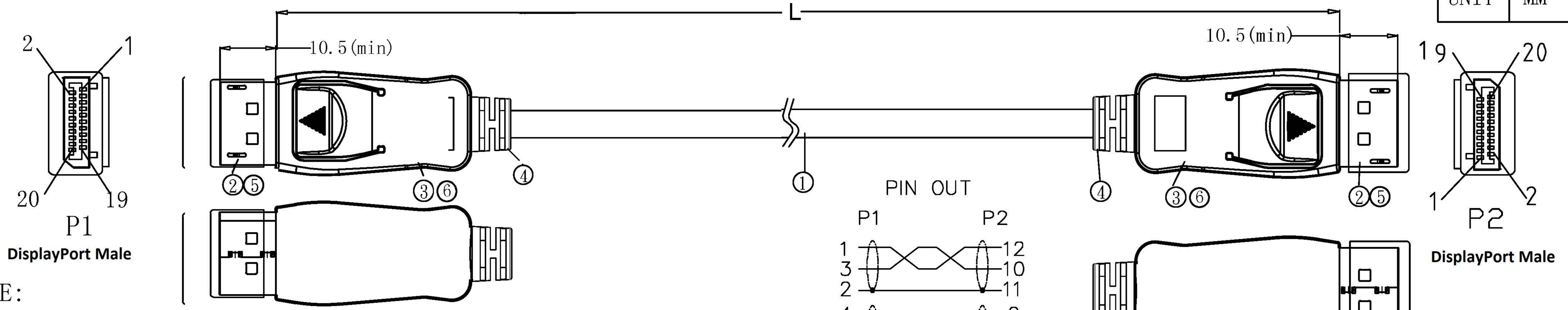


| | |
|------|----|
| UNIT | MM |
|------|----|



NOTE:

1. Electrical test:
 - (1). 100% open short & miss wire test
 - (2). Insulation resistance: DC 300V 0.01s 10M ohm min.
 - (3). Contact resistance: 3 ohm max.
 - (4). Bandwidth: 40Gbps max.
2. Computer + Monitor test
 - (1). Resolution: 3840*2160@120Hz
3. Marking: DisplayPort Cable E***** AWM STYLE 20276 80°C 30V VW-1
 --- 10K/8K DisplayPort 2.0 UHBR 10
4. RoHS and REACH Compliant

MATERIAL LIST:

| | | | | |
|-----|-------------|---|------------|--------|
| ⑤ | DUST CAP | LD PE | 2 | |
| ④ | TUBE END | BLACK PVC 45P | 2 | |
| ③ | OUTER COVER | BLACK ABS ASSEMBLY TYPE | 2 | |
| ② | CONNECTOR | DP 20P/M WITH LATCHING Blue INSULATION, THE PIN GOLD PLATED , THE SHELL FOR GOLD PLATED | 2 | |
| ① | CABEL | DP2.0V CABLE[(30AWG BC)*1P+D+FAM]*5+(30AWG BC)*4C+AL-FOIL+(30AWG BC)+BRAID, JACKET:PVC black OD:6.0±0.2mm | 1 | |
| NO. | PARTS NAME | SPECIFICATION DESCRIPTION | QT' Y | REMARK |
| | | NEW | 2021-11-03 | A |
| BY | CHK | REVISION RECORD MODIFICATIONS | DATE | REV. |

| ITEM NO. | LENGTH |
|------------|-----------|
| 11.04.6000 | 1000±30mm |
| 11.04.6001 | 1500±30mm |
| 11.04.6002 | 2000±50mm |

DESC. ROLINE DisplayPort Cable, DP 2.0, DP M / DP M, black

